

EAST FACADE



NORTH FACADE



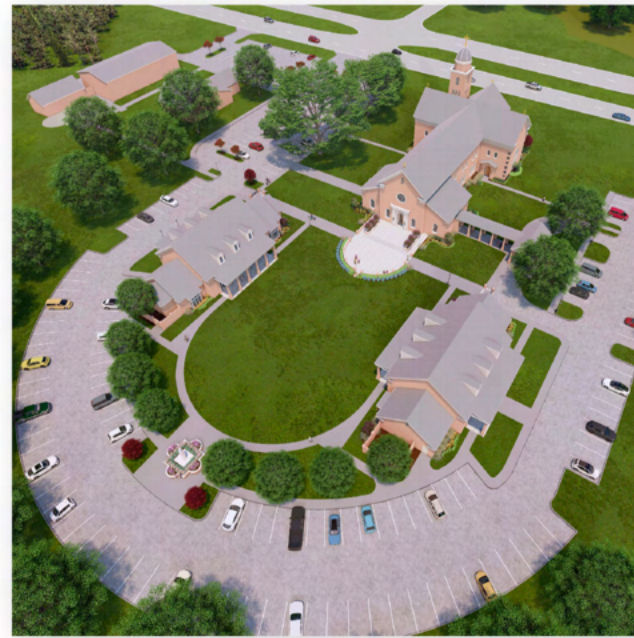
CHURCH FRONT • MAIN ENTRY



SOUTH FACADE



AERIAL VIEW



GREAT LAWN • PARISH HALL • OFFICE



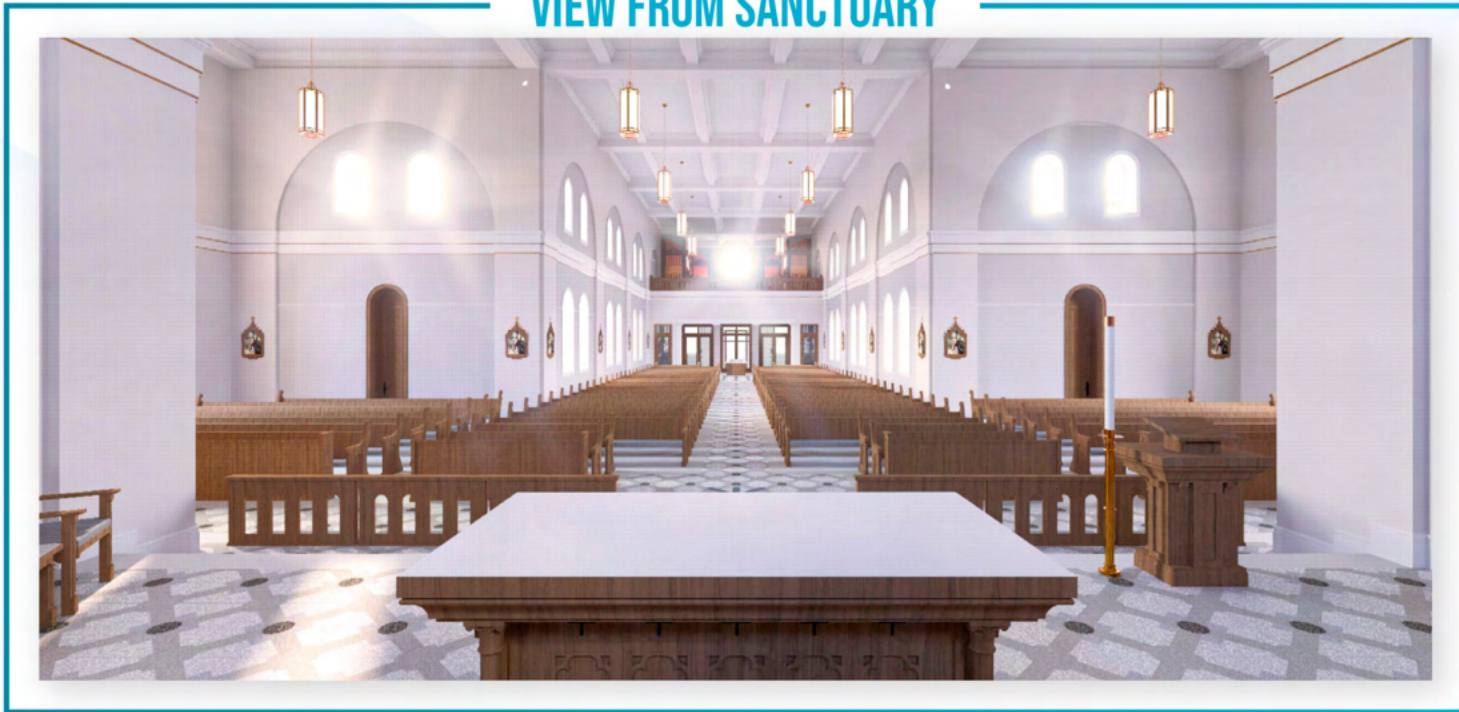
✦ WHERE WE'RE GOING

This capital campaign will allow St. Pius X to build a new church with seating capacity for nearly 600 people, along with the opportunity for additional seating as needed during busy liturgical celebrations like Christmas or Easter. Long-term, we hope to also build new office space to accommodate ministries, a larger multi-purpose building, adequate classroom space for our Religious Education program, and a cemetery. Once those additional buildings are complete, we hope to re-purpose the current space for the youth.

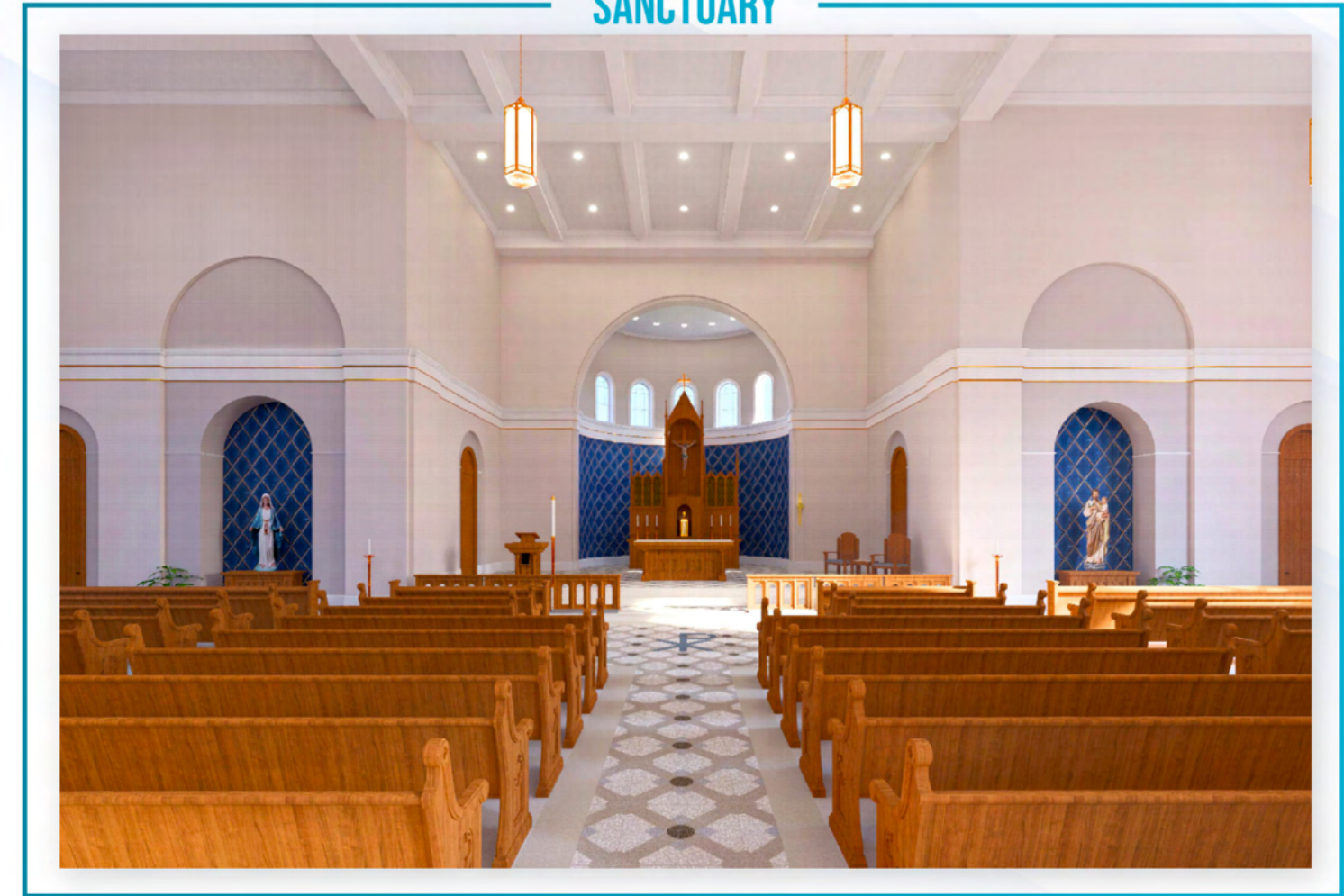
PHASE 1



VIEW FROM SANCTUARY



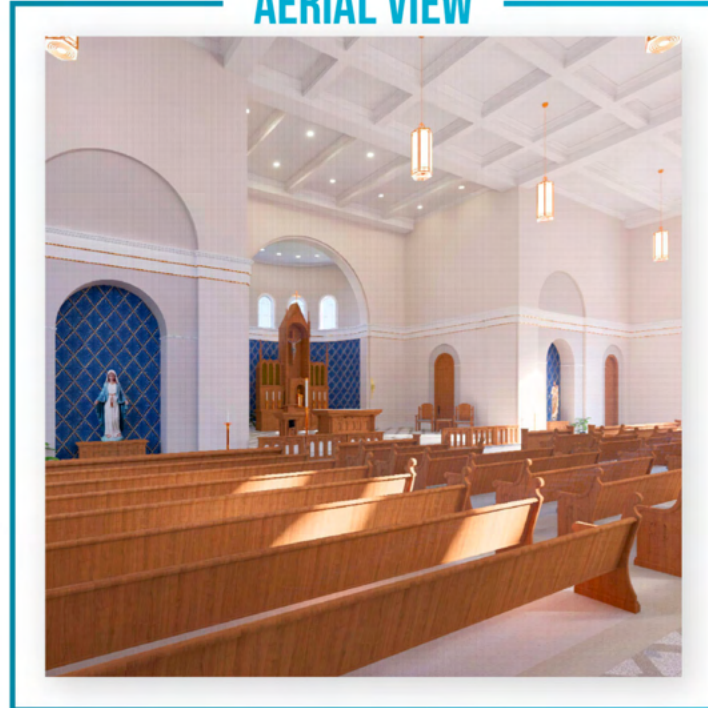
SANCTUARY



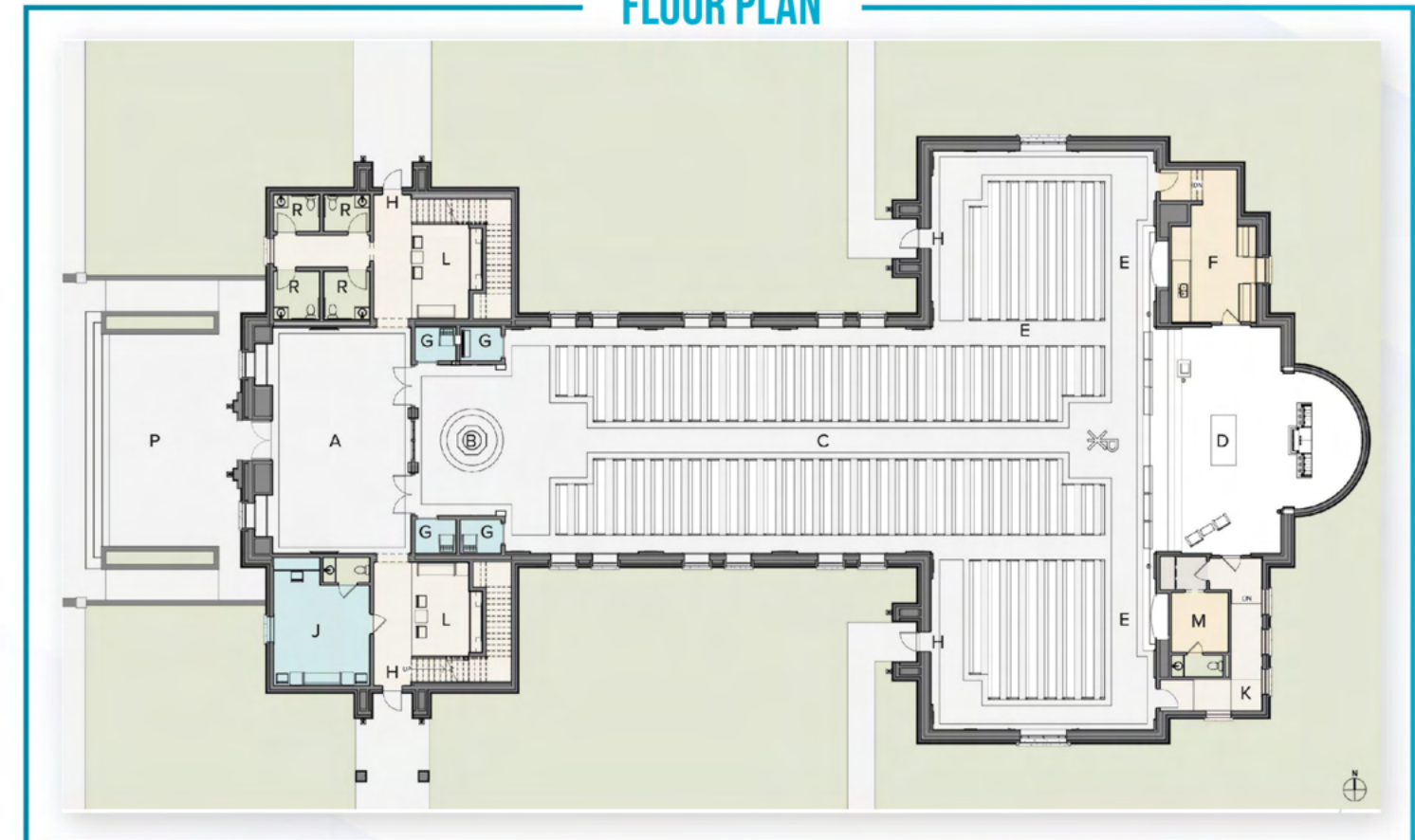
BAPTISTRY VIEW



AERIAL VIEW



FLOOR PLAN



FLOOR PLAN

- A • Narthex
- B • Baptismal Font
- C • Nave
- D • Sanctuary
- E • Side Shrine
- F • Sacristy
- G • Confessional
- H • Side Entry
- J • Bride's Room
- K • Sanctuary Ramp
- L • Sitting Room
- M • Priest's Sacristy
- N • Restrooms
- P • Plaza
- Q • Choir Loft Access
- R • Restroom

PHASE 1

